

TK GUIDELINE

***THERMOSTAT
REPLACEMENT***

MODELS :

TK500 – TK1000 – TK 2000

EQUIPMENT



Screw-driver



*Thermostat
(spare part)*

STEP n. 1



Remove the conveyor from the top part of the chiller.

You can see the metal black grid and the red fan support.



STEP n. 2

Remove the air filter grid and air filter from their position.



STEP n. 3



Using the screw-driver, remove the 4 INOX screws indicated in the picture here below.



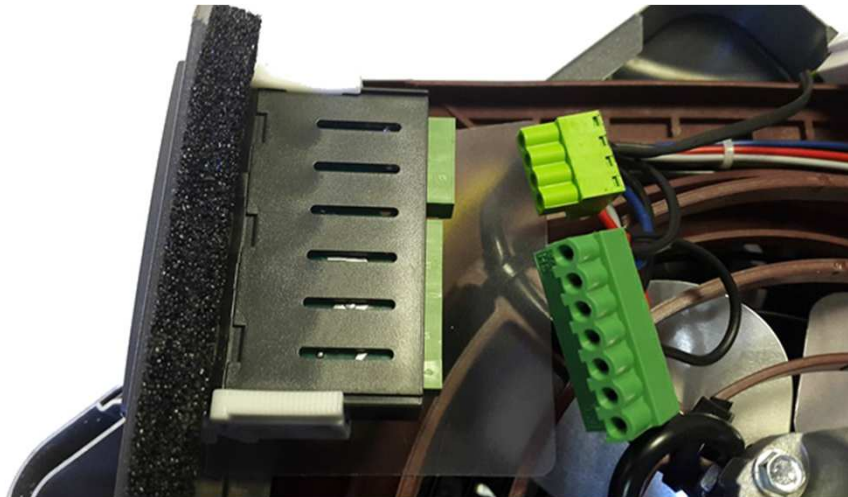
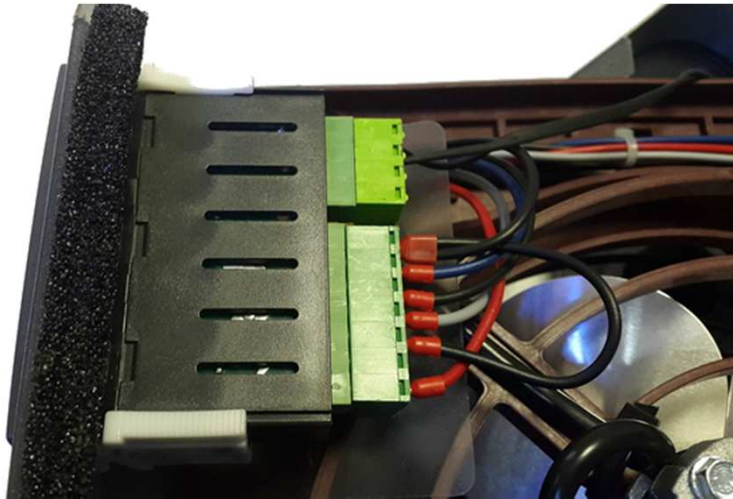
STEP n. 4

Remove the red fan support lifting it up from the bottom edge.

Leave it on the metal cover, as you can see in the picture.



STEP n. 5



Disconnect the main green connector and probe connector.

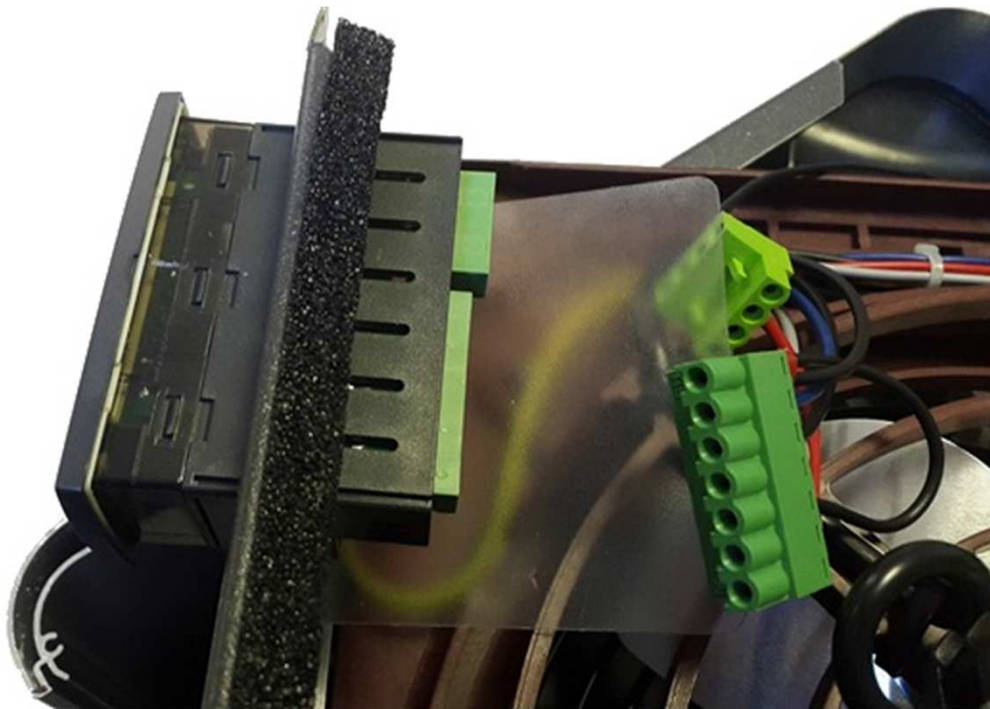
STEP n. 6



Remove the two white thermostat's supports. You can help you using a screw driver.



STEP n. 7



Remove the thermostat from its placement and replace it with a new one. Insert the white supports and connect the two green connectors.

STEP n. 8



Take the fan support and fix it at the bottom part of chiller.

Attention: the front panel side must be insert in the aluminum profile!

STEP n. 9

Rebuild the top part of the chiller following the indicated sequence:

- 1. 4 INOX screw (fix the fan support on the metal cover)*
- 2. Conveyor*
- 3. Air filter*
- 4. Air filter grid*